

ZKS-3B Lead Free Dual Wave Soldering Machine



Machine Characteristics

- Windows platform, Chinese & English interface
- PLC + Commercial computer controls, excellent reliability
- System software automatically generate backup & log files
- Automatic spray fluxer, timing and speed auto adjustment
- PCB On-line furnace temperature test
- Lengthened Hot air pre-heaters in 4 sectors
- Intelligent fault alert system
- Heat compensation unit, efficiently reduce thermal shock
- Use special conveyor track, reduce and minimize thermal deform
- Visual & Audio alert, emergency shutdown
- Programmable & fully automatic system on/off timer
- Cast Iron with ceramic coating designed solder pot structure
- Enclosed cooling structure
- Spray fluxer head driven by step motor



Main Item	Parameter
Pre-heating length	1800mm sepeately control
Power	3 Phase. 5 Cables 380Vac 50/60 Hz; air press >4kg/cm2
Startup Consumption	≤21.5kw
General Consumption	6~8 kw
Temperature Control	PID Closed Loop Controlled
Temperature Accuracy	±1°C
Temperature Deviation	±2°C
Process Width	50-350mm (450mm Option)
Process Height	750mm±30mm
Conveyor Speed	0-1800mm/min
Conveyor Inclination	4。 -7。
Temperature Setpoint	Pre-heat: room temp 200°C Solder Pot: Room temp 350 °C

Main Item	Parameter
Spray Height	50-80mm
Molecular Size	20-40 microns
Flux Nozzle Diameter	1.3mm
Pre-heat Consumption	220Vac 4kw ×3
Heat Compensation	220Vac 1kw
Heat Up Style	Hot Air Convection-50CFM
Pot Capacity	450kg
Pot Material	Cast Iton with ceramic coating
Tin pot up/down、 in/out	Motorized
Fault Alert	Buzzer Alarm,Monitor Display&Light Tower
Breakdown Protections	Overload, Overtemp&Missing Phase Protection, Board Jam Alert
Exhaust requirement	150x 2 pipe velocity: ≥3m/ SEC



Control Software

Windows platform, Chinese and English user friendly interface.

Error and fault On screen display, automatically generate history log file.



Per-heaters

3 sectional Hot Air pre-heater in total length of 1800mm, efficiently activate liquid flux.

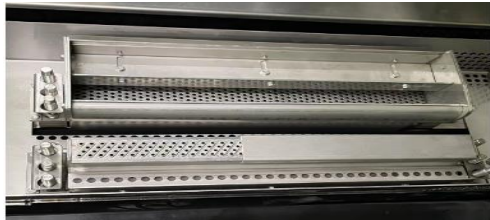
Variable speed hot air circulation structure, enhance better heat distribution.

Independently temperature control of pre-heaters, fast ramp up and flexible to meet with different target profile.



Spray Fluxer

Spray Fluxer unit is driven by Step Motor, Liquid Flux more evenly distributed Enclosed and isolated fluxer structure, minimized flux vaporization and contamination Intelligent spray controls, spray area automatically adjusted regarding.



New designed Solder Pot Structure

Cast Iron with ceramic coating solder pot, corrosion resist and long lifetime
Single tank with external heat up structure, enhance better heat transmission and avoid splitting of solder.
Critical heating element with copper shielding, provide better heat conduction.
Multi angle chip wave design, high flexibility for different SMT applications.
Low dross formation design of Lambda wave.
Extremely short displacement between two waves.



Nitrogen Structure (Option)

Imported brand-name Oxygen Analyzer, real time and accurately secure Oxygen contents and maintain Nitrogen level.
Pre-heater passage and solder pot enclosed structure, minimize the case of Nitrogen leakage and highly reduce Nitrogen consumption.

Operation Interface



Machine View



Status Bar



Alarm Record & Notepad



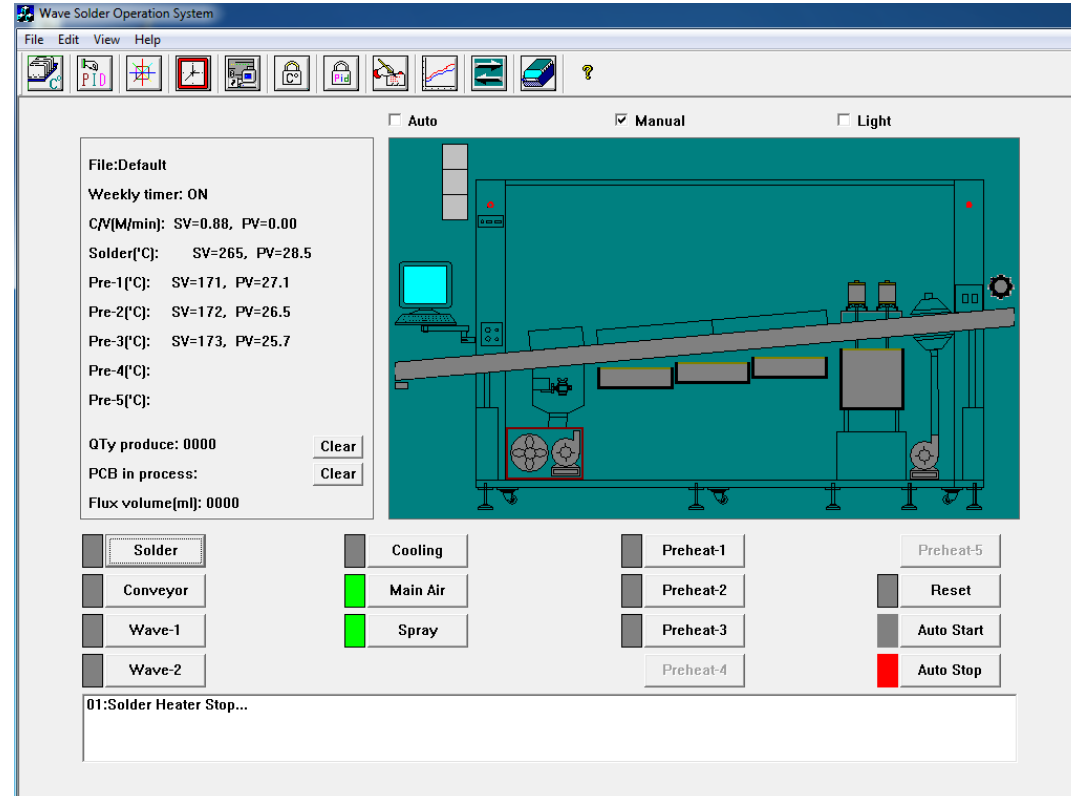
Dynamic Simulation



Data Display Zones



Function Options



Spray Fluxer

ZKS-3B Spray Fluxer unit is driven by Step Motor, Liquid Flux more evenly distributed Enclosed and isolated fluxer structure, minimized flux vaporization and contamination Intelligent spray controls, spray area automatically adjusted regarding

Characteristics

- User friendly touch screen controls
- Away from Wave soldering heat source
- Independent bilateral exhaust structure, reduce
- Flux fume adhesion, improve cleanliness
- Pressured jet cleaning structure of chain fingers
- Spray head driven by stepper motor with smooth speed
- Automatic flux refill, reduce manpower

