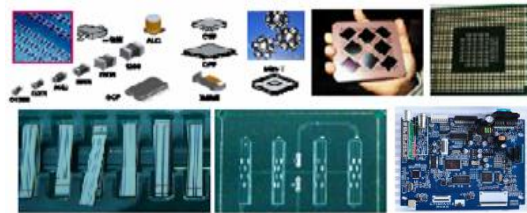


AX7900 X-Ray

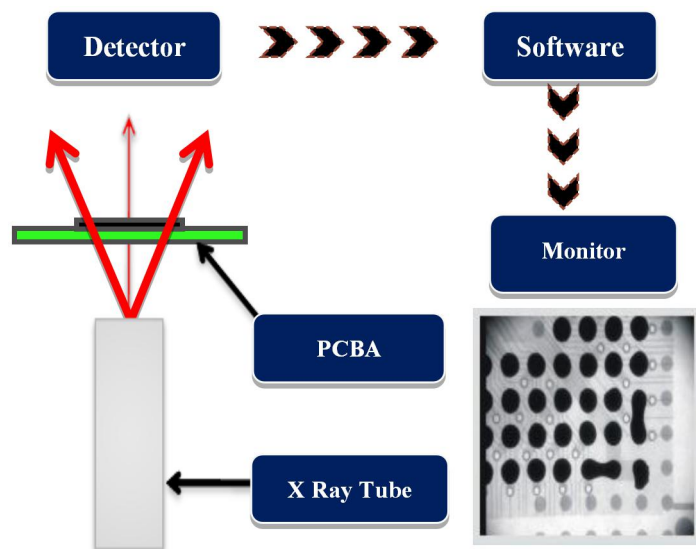
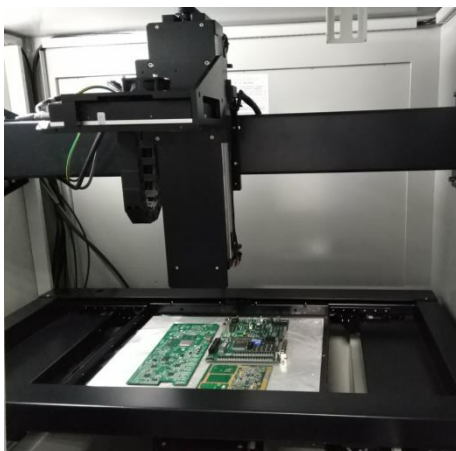
Application

SMT, BGA, CSP, Flip Chip, LED Detection,
 Semiconductor, Packaging components, Battery Industry,
 Electronic components, Automotive parts, Photo-voltaic,
 Aluminium Die-casting, Moulding Plastic.
 Ceramics, other special industries.

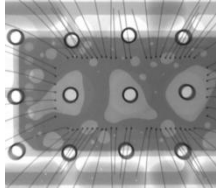


Features

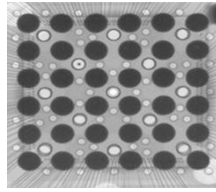
- 90kV 5μm closed X-ray tube
- High resolution FPD with 4-axis motion system, meet basic inspection demands
- Navigation in windows, target tracking conveniently
- CNC program, improve efficiency significantly
- Max. loading area 440mm×400mm, max. inspection area 420mm×380mm, with 360X Magnification



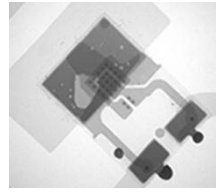
X-Ray Inspection Images



IC wire



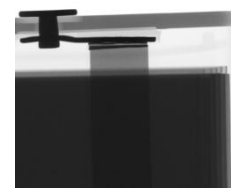
BGA Voids



LED



Connectors/Cables



Lithium Battery

Technical Specifications

| Item | Description | Specifications |
|-----------------------------|---|--|
| X-Ray Tube | Max. Voltages, Type | 90kV, Closed |
| | Power Consumption | 8W |
| | Focal Spot Size | 5 μm |
| | Motion range (Up and Down) | 140mm |
| | Magnification | 360X |
| Detector | Detector Type | FPD |
| | Resolution | 101 LP/cm |
| | Effective Area | 58mm×54mm |
| | Motion range (Up and Down) | 300mm |
| System Computer | Operating System | Industrial PC, Win 7, i7 Processor |
| | Monitor | 22" LCD |
| Software | User Interface | Unicomp Multi-function DXI image processing system |
| Working Platform | Max. Loading Area | 440mm×400mm |
| | Max. Inspection Area | 420mm×380mm |
| | Max. Loading Weight | 5kg |
| | Movement Control | Joysticks, Mouse and Keypads |
| Navigation | Camera | HD Camera, Laser point |
| Axis | Manipulator | 4-axis with X / Y / Z1 / Z2 |
| Equipment Features | Power Supply | AC 110~220V (±10%) 50Hz, 1kW |
| | Outline Dimensions | 1100(W)×1060(D)×1500(H) mm |
| | System Weight | 1000 kg |
| Optional Accessories | Rotation Jig | |
| Warranty | One year warranty, free replacement the parts due to original manufacturer's defect, but expect of man-made damages and force majeure | |

X-Ray Safety: All X-ray machines manufactured by Unicomp Technology meet the FDA-CDRH Regulation CFR 21 1020.40 Subchapter J for cabinet x-ray systems. The FDA - CDRH standard for cabinet x-ray systems states that radiation emission will not exceed .5millirem a /hr.2"from any external surface. Our machines (**Leakage <math><1\mu\text{Sv/h}</math>**) are typically 5-10 times less than the international standards,

■ Specifications are subject to change without notice, all trademarks are the property of the system maker