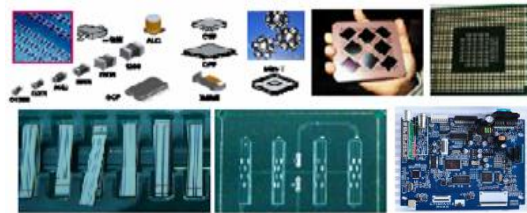


AX8200 X-Ray

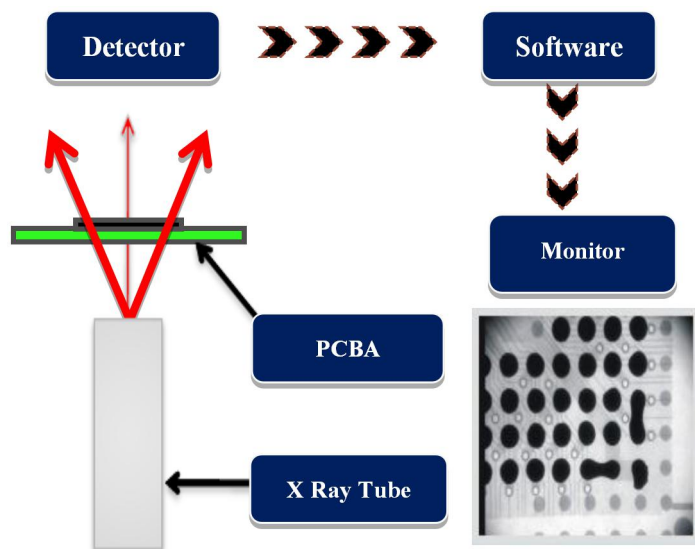
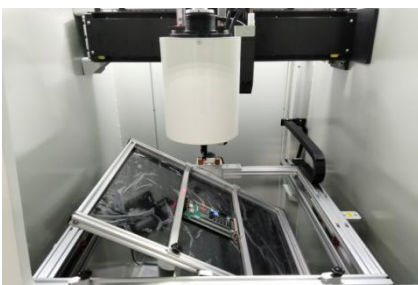
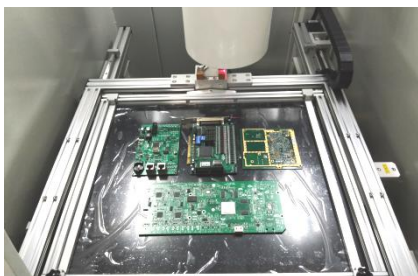
Application

BGA , CSP , Flip Chip, LED , Fuse, Diode, PCB Semiconductor , Battery Industry , Small Metal Casting, Electronic Connector Module, Cables, Aerospace Components, Photovoltaic Industry,

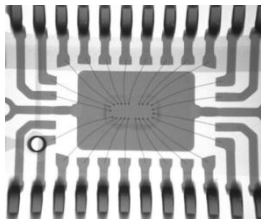


Features

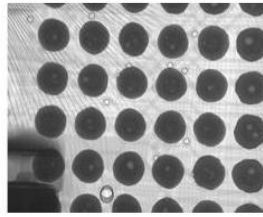
- 90kV 5μm closed X-ray tube, 4"image intensifier with 2 mega pixels CCD camera
- Multi-function workstation with±60° tilt and X-Y multi-axis movement
- X-ray tube & detector automatic lifting and descending, with convenient target point positioning system
- Multi-function DXI image processing system, CNC programmable detection
- Max. loading area 510mm*420mm, max. inspection area 435mm*385mm, with 600X Magnification



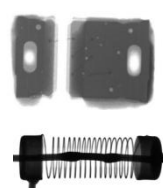
X-Ray Inspection Images



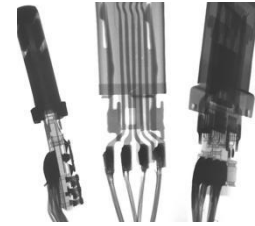
IC wire



BGA Voids



Components



Cable / Connectors

Item	Description	Specifications
X-Ray Tube	Max. Voltages, Type	90kV, Closed
	Power Consumption	8W
	Focal Spot Size	5 μ m
	Motion range (Up and Down)	150mm
	Magnification	600X
Detector	Intensifier	4" (FPD Optional)
	Resolution	77/110 LP/cm
	Camera	200 Mega Pixel CCD
	Motion range (Up and Down)	290mm
System Computer	Operating System	Industrial PC, Win 10, i7 Processor
	Monitor	22" LCD
Software	User Interface	Unicomp Multi-function DXI image processing system
Working Platform	Max. Loading Area	510mm×420mm
	Max. Inspection Area	435mm×385mm
	Max. Loading Weight	10kg
	Movement Control	Joysticks, Mouse and Keypads
	Table Tilting Angle	$\pm 60^\circ$
Navigation	Camera	HD Camera, Laser point
Axis	Manipulator	5-axis with X / Y / Z1 / Z2 / T
Equipment Features	Power Supply	AC 110~220V ($\pm 10\%$) 50Hz, 1.0kW
	Outline Dimensions	1080(W)×1180(D)×1730(H)mm
	System Weight	1150 kg
Optional Accessories	1.Barcode Scanner; 2.Dimension Measurement Gauge	
Warranty	One year warranty , free replacement the parts due to original manufacturer's defect, but expect of man-made damages and force manure	

X-Ray Safety: All X-ray machines manufactured by Unicomp Technology meet the FDA-CDRH Regulation CFR 21 1020.40 Subchapter J for cabinet x-ray systems. The FDA - CDRH standard for cabinet x-ray systems states that radiation emission will not exceed. 5millirem a /hr.2"from any external surface. Our machines (**Leakage <1 μ Sv/h**) are typically 5-10 times less than the international standards,

■ Specifications are subject to change without notice, All trademarks are the property of the system maker

Rev 2.0 LOT NO: 20200701