



AX9100 X-Ray

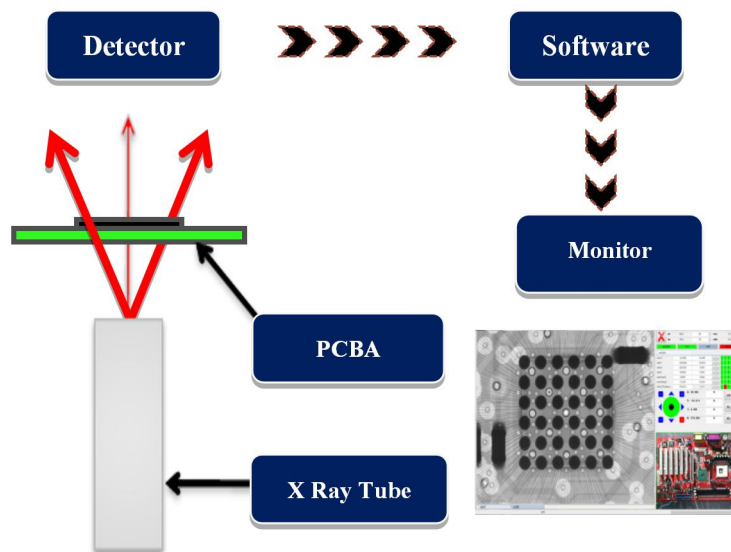
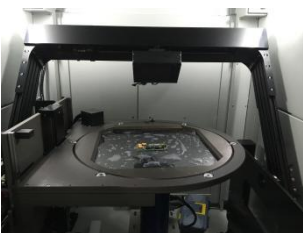
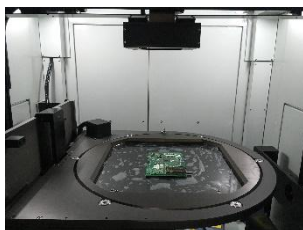
Application

SMT, BGA, CSP, Flip Chip, LED Detection,
 Semiconductor, Packaging components, Battery Industry,
 Electronic components, Automotive parts, Photo-voltaic,
 Aluminium Die-casting, Moulding Plastic.
 Ceramics, other special industries.

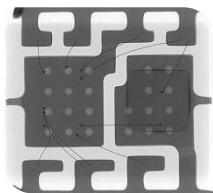


Features

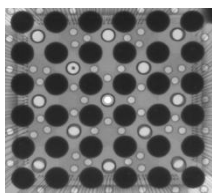
- 130kV 3μm closed X-ray tube, high speed & Millions pixels high resolution FPD
- Tilt detection with 55° and rotation 360° operation together with 7 axis movement
- X-ray tube & detector automatic lifting and descending, with convenient target point positioning system
- Multi-function DXI image processing system, CNC programmable detection
- Max. loading area φ570mm, max. inspection area 450mm*450mm, with 1600X Magnification



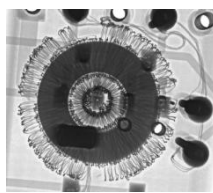
X-Ray Inspection Images



IC wire



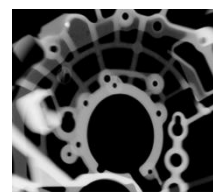
BGA Voids



Electronic Component



Lithium Battery



Die Casting parts

Technical Specifications

Item	Description	Specifications
X-Ray Tube	Max. Voltages, Type	130kV , Closed
	Power Consumption	40W
	Focal Spot Size	3 μ m
	Magnification	1600X
Detector	Detector Type	FPD
	Resolution	58 LP/cm
	Effective Area	130mm \times 130mm
System Computer	Operating System	Industrial PC, Win 7, i7 Processor
	Monitor	22" LCD
Software	User Interface	Unicomp Multi-function DXI image processing system
Working Platform	Max. Loading Area	ϕ 570mm
	Max. Inspection Area	450mm \times 450mm
	Max. Loading Weight	10kg
	Movement Control	Joysticks, Mouse and Keypads
	Motion Range (Up and Down)	200mm
	Oblique/Rotation	FPD 55° Tilting and Table 360° Rotation
Navigation	Camera	HD Camera, Laser point
Axis	Manipulator	7-axis with X1/ X2 / Y / Z1/Z2 / T (55°) / R(360°)
Equipment Features	Power Supply	AC 110~220V (\pm 10%) 50Hz, 2.0kW
	Outline Dimensions	1450(W) \times 1500(D) \times 1850(H)mm
	System Weight	1900 kg
Optional Accessories	None	
Warranty	One year warranty , free replacement the parts due to original manufacturer's defect, but expect of man-made damages and force majeure	

X-Ray Safety: All X-ray machines manufactured by Unicomp Technology meet the FDA-CDRH Regulation CFR 21 1020.40 Subchapter J for cabinet x-ray systems. The FDA - CDRH standard for cabinet x-ray systems states that radiation emission will not exceed. 5millirem a /hr.2"from any external surface. Our machines (**Leakage <1 μ Sv/h**) are typically 5-10 times less than the international standards,

■ Specifications are subject to change without notice, all trademarks are the property of the system maker