

KIC Getting Started Guide - KIC Explorer Datalogger

1

KIC Explorer Inventory Checklist

- KIC Explorer Datalogger (7, 9 or 12 channel)
- USB Communication Cable
- Thermal Shield (Stainless Steel, Cool Touch)
- Thermocouples (7, 9 or 12)
- Aluminum Tape and Hi-temp Solder
- KIC Software
- Software Key (only if software options were purchased)
- Gloves
- Scissors

If you are missing any purchased components, please contact your vendor or KIC immediately.

2

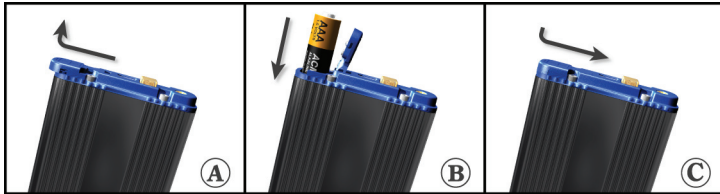
Install Software

This must be completed before connecting the Profiler Equipment or Software Key to your PC



3

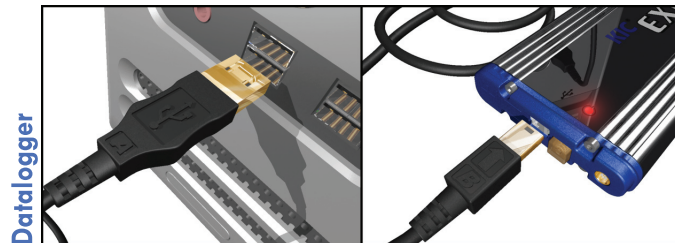
Install Batteries



4

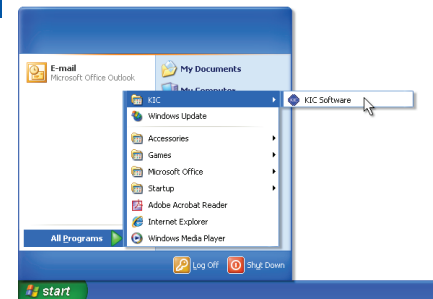
Connect KIC Profiler Equipment

Read the *KIC Explorer Hardware Config* section in the manual for details



5

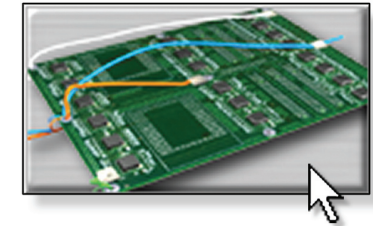
Start KIC Software



8

Run A Profile

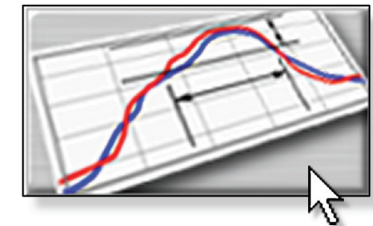
Read the *Run A Profile* section in the manual for details



7

Define Process Window

Read the *Process Window Setup* section in the manual for details



6

Set Global Preferences

Read the *Global Preferences* section in the manual for details



www.kicthermal.com
www.kic.cn

