

E380

Hot melt dispensing machine

Features

- Max 380x380x100mm stroke
 - Compacted machine dimensions (300mm machine dimensions)
 - Bigger working stroke (380mm working table)
 - One-piece casting body
 - Multifunctional, reliable, simple
 - User friendly, and low maintenance
 - Different dispensing applicators:

1. 30cc syringe dispenser (low viscosity)
 2. 30cc drip-proof dispenser (low viscosity)
 3. 300ml pneumatic cartridge dispenser (medium viscosity)
 4. 300ml cylinder ceramic rotate dispenser (medium to high viscosity)
 5. 30cc hot melt (resin, glue stick, chips)
 6. 1.5 gallons dispenser
 7. 2600ml dispenser

For different hot melt adhesives

Different solid glues, or hot melt glue in the syringe can put into the white ceramic heating device to be melted and dispense directly, usually material supplier has 30cc package. But sometimes, we can buy 30cc syringe in the market and cut into small pieces to be place inside a syringe to be melt. Check with your material supplier for opioion.



Loctite 3542, Fuller 9646, 3M 2665, ITW 64167, and many others.

Dispensing machine DIY

Temperature
control

Dispensing
system

CNC robot



30cc hot melt



Different type hot melt robot solutions, and more...



Hot melt with rotate fixture



Hot melt with 10 liters tank



Hot melt with two dispensing desks

More introduction about E380

E380 can use many different dispensing applicators



30CC syringe



30CC + suck-back valve



30cc hot melt



300ml pneumatic cartridge +
suck-back valve



300ml cylinder + ceramic valve

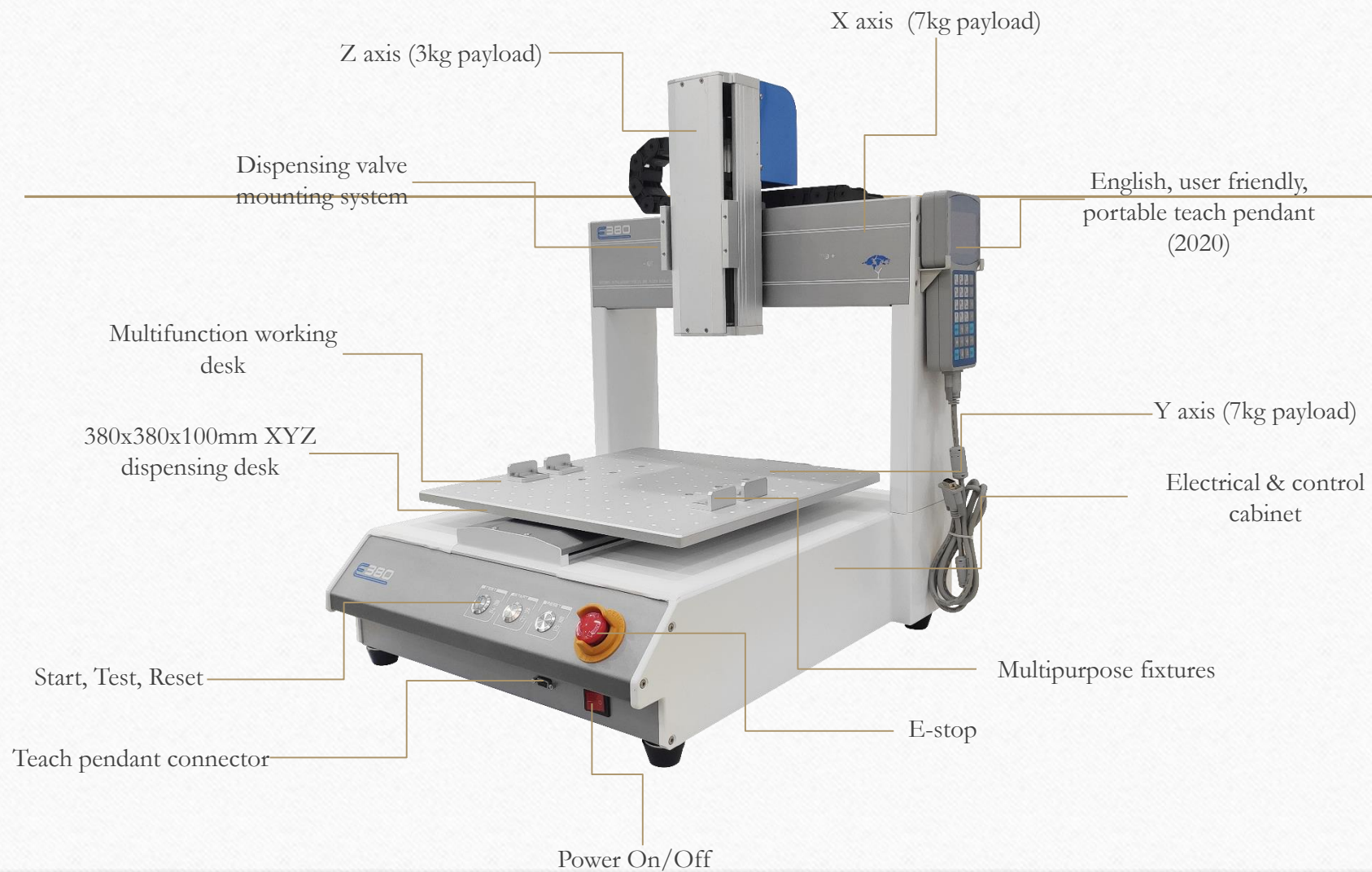


2600ml + suck-back valve



1 gallon + suck-back valve

E380 Cartesian robot



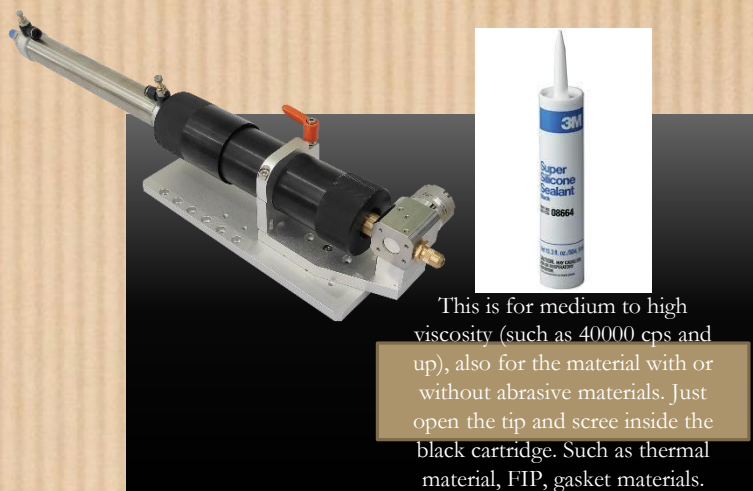
Also check below for machine details specifications.

With these applicators, we are about fulfill 80% of the desktop dispensing needs. There is instant, quick dry glue, two comparts of glues, and other specialty, but those are for other machines and equipment. We supply also, email me for details.

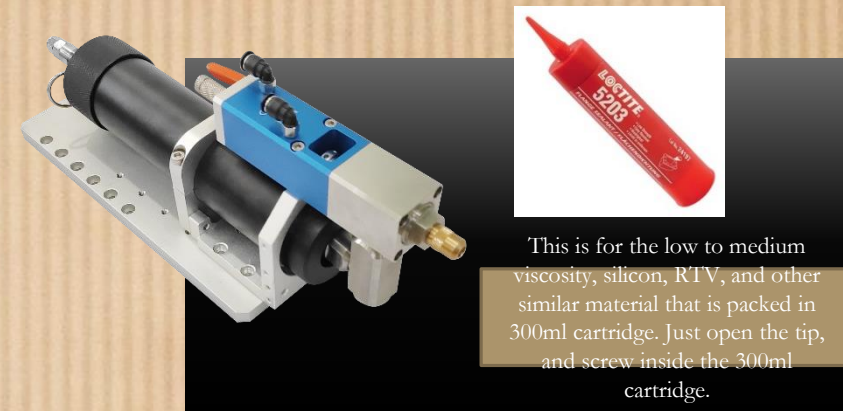
Different applicators (valves) for different glues:



30CC syringe



300ml cylinder ceramic valve



300ml pneumatic cartridge + suck-back valve



30CC + suck-back valve



1 gallon + suck-back valve



2600ml + suck-back valve



30cc hot melt

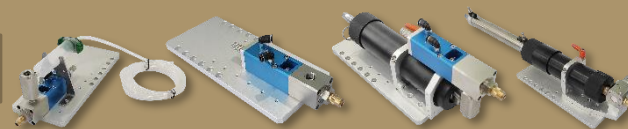
Dispensing and temperature controllers:



SEC-100T (for dispensing control)



SEC-100TD (for dispensing control)



SEC-200S (for dispensing control)



SEC-2665 (for temperature control)



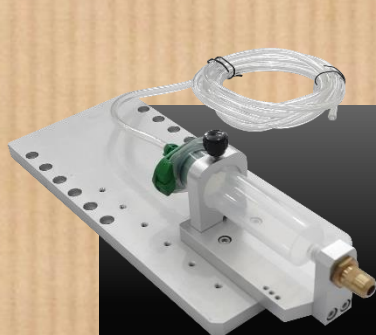
30cc syringe dispenser

E380 Cartesian robot

Dispensing control

Teach pendant

30cc syringe dispenser



When glue come in syringe, it can
be clip to the position and dispense.
If glue come in bottles, can pour
into syringe and dispense.
Liquid or fluid also can.

30CC syringe

30cc + suck-back valve

E380 Cartesian robot

Dispensing control

Teach pendant

30cc syringe dispenser

Suck-back (drip proof) valve



This dispensing applicator comes with a draw-back valve. Suitable for low viscosity liquid or fluid also can.

30CC + suck-back valve

30cc hot melt

External pre-heater

Temperature control

Teach pendant

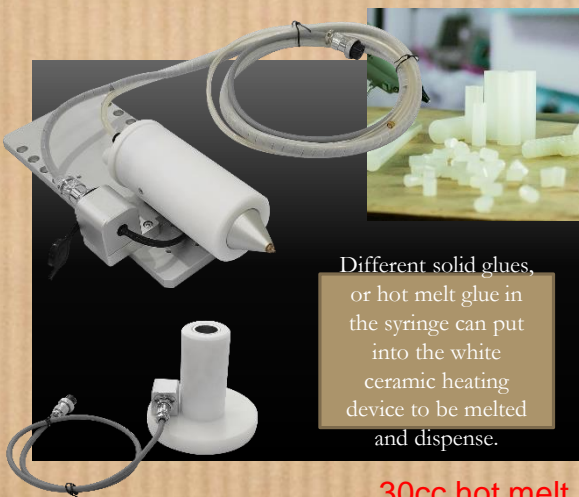
30cc hot melt dispenser

E380 Cartesian robot

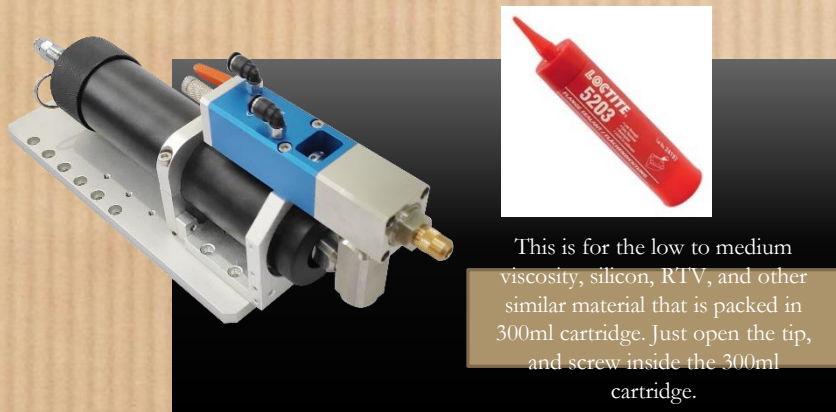
Dispensing control

Different solid glues,
or hot melt glue in
the syringe can put
into the white
ceramic heating
device to be melted
and dispense.

30cc hot melt



300ml pneumatic cartridge, suck-back valve



300ml pneumatic cartridge, suck-back valve

DIY your own desktop dispensing machine



300ml cylinder ceramic valve

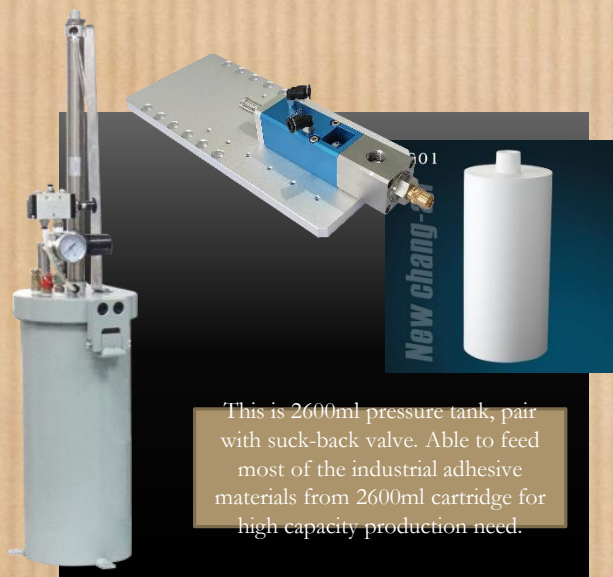
1.5 gallon + suck-back valve



1 gallon + suck-back valve



2600ml + suck-back valve



This is 2600ml pressure tank, pair with suck-back valve. Able to feed most of the industrial adhesive materials from 2600ml cartridge for high capacity production need.

2600ml + suck-back valve

2600ml material tank

Dispensing control

Teach pendant

Suck-back (drip proof) valve

E380 Cartesian robot



User friendly teach pendant:



Main page, select the working purpose



Main page, select task



Main page, setup new dispensing task



Main page, select movement patterns

These are some reference screens, basically select and enter, app like. Instruction is available.

Delivery timeline:

Machines and dispensing applicators are available in stock while it last, refill time is around 5-10 days.

Shipping depends on route, means, and destination, below is just an estimate.



Easy torn and worn spare parts:

The parts suggest here is under or around 3 months of 8 hours per day working usage, and with the standard adhesive material. If clean well, and use less, many of the parts will even last longer. This is just for references.

valve

1. Nozzle, pin, or needle (depends on usage, clean, and materials. Est. 1-7 days).
2. Sealing rings (depends on materials. Est. 2-6 months).
3. Pipes, hoses (depends on caring. Est. 3 months and above).

Machine

1. Dispensing controller (depends on caring, 12 months and up).
2. Machine electronic, motors, and belts (depends on caring, 12 months and up).

Machine itself has not easy worn parts, it is under 12 months warranty. All natural disaster, man-made damage are not warrantied.

Maintenance suggestions:

The machine is aim for durable usage, and low maintenance design. The only care that need most is the valve and the filling system because they are contacting with adhesive materials.

Dispensing equipment maintenance and care check list (suggestion)

Machine model: ¹⁾		Date of manufacture: ²⁾												Operator: ³⁾												Manager: ⁴⁾												Department: ⁵⁾											
		Date												Month												Year																							
		1 2 3 4 5 6 7 8 9 10 11 12												13 14 15 16 17 18 19 20 21 22 23 24 25 26 27 28 29 30 31																																			
Check date: ⁶⁾		Check record: ⁷⁾																																															
Point check period/content: ⁸⁾																																																	
Daily check ⁹⁾	1- Surface cleaning, working desks, controller, teaching pendant, and fixture. ¹⁰⁾																																																
	2- Check if there is any abnormal noise in the machine running. ¹¹⁾																																																
	3- Check if the XYZ (rotate) axis move smoothly. ¹²⁾																																																
	4- Check if the teaching pendant can function well or not. When the machine is power on, press buttons to listen to the sound, watch the display screen reacts, and watch the movement of fixture as comment. ¹³⁾																																																
	5- Check if the dispensing valve can extrude glue properly or not by using the buttons, and controller. ¹⁴⁾																																																
	6- Check if the dispensing controller air connect and feed properly. ¹⁵⁾																																																
	7- Check if glue was removed, valve, and nozzles are cleaned or replaced after production completed. ¹⁶⁾																																																
Weekly check ¹⁷⁾	8- Check cables, connectors and check all air pipes, hoses are well connected. ¹⁸⁾																																																
	9- Check the fastening of the bolts of the moving parts, loosen or tighten if necessary. ¹⁹⁾																																																
	10- Clean and remove all spot, stain, and other all fluid thoroughly. ²⁰⁾																																																
Monthly check ²¹⁾	11- Check the XYZ (rotate) axis can reach to its max, and see if the settings are correct. Monitor, lead screw moves and sounds normal, if need to apply lubricant if necessary. ²²⁾																																																
	Signature: ²³⁾																																																
	Abnormal situation record: ²⁴⁾																																																
Remarks ²⁵⁾	1. The operator signs the machine after each maintenance and check. ²⁶⁾																																																
	2. After maintenance, check with " / " , " O " means rest or holiday, " X " indicates abnormal condition, and should be recorded in the " Exception Record " column. ²⁷⁾																																																
	3. The inspection should be carried out at the beginning of each shift. If abnormalities are found during the inspection, the maintenance personnel should be contacted in time. ²⁸⁾																																																

Approved: _____ Review: _____ Record #: _____

For specifically cleaning agent or solvent need, please check and ask your material suppliers.

Specifications:

Model	SEC-E380	SEC-E480
Working range	380(X)*380*(Y)*100(Z)	480(X)*480(Y)*100(Z)mm
Max payload	XY axis 7kg, Z axis 3kg	
Max travel speed	400mm/sec(XY)/200mm/sec(Z)	
Transfer method	Stepper motor, belt, lead screw	
XYZ position accuracy	±0.025mm	
Resolution	0.01	
Memory storage	999 program setup (each program store up to 65535 spots)	
Operating method	LCD, Teach pendant	
Motor	Precision stepper motor	
Movement patterns	3 axis spot to spot, continue line, arc	
I/O	1 input, 4 output (support expansion)	
Power supply	AC220V 50/60Hz 0.5kw	
Working environment	Temperature 0-40℃, Humidity 20-90%	
Machine dimension	Approx. 48KG	Approx. 60KG
Machine dimension	520*583*645mm	620*683*645mm

Instruction:

1. PDF instruction
2. Demo videos
3. Online WeChat support

THANK YOU VERY MUCH

Stock is available now
(eric@second-auto.com)