

Model No. NM-EJA3A

### ● High Speed Axial Lead Component Insertion Machine

• High speed insertion of 0.12 s/component and high speed transfer for much greater productivity. (Note)

(Note) AVK3 commonality specification

Model ID	AV131	
Model No.	NM-EJA3A	NM-EJA2A
PCB dimensions	L 50 mm x W 50 mm to L 508 mm x W 381 mm	L 50 mm x W 50 mm to L 508 mm x W 381 mm
Max. speed <sup>*1</sup>	0.12 s/component	0.12 s/component
No. of component inputs	60+60+JW (JW is optional)	60+JW (JW is optional)
Applicable components	Resistors 1/8 W, 1/6 W, 1/4 W, 1/2 W, Jumper wire (tin-plated wire), Diodes, Cylindrical ceramic capacitor	Resistors 1/8 W, 1/6 W, 1/4 W, 1/2 W, Jumper wire (tin-plated wire), Diodes, Cylindrical ceramic capacitor
PCB exchange time	about 2.0 s	about 2.0 s
Insertion direction	4 directions (0°, 90°, 180°, 270°)	4 directions (0°, 90°, 180°, 270°)
Electric source <sup>*2</sup>	3-phase AC 200 V, 4 kVA	3-phase AC 200 V, 4 kVA
Pneumatic source	0.5 MPa, 150 L/min (A.N.R.)	0.5 MPa, 150 L/min (A.N.R.)
Dimensions	W 4 070 mm x D 1 910 mm x H 1 610 mm <sup>*3</sup>	W 2 810 mm x D 1 910 mm x H 1 610 mm <sup>*3</sup>
Mass <sup>*4</sup>	2 520 kg	1 750 kg

<sup>\*</sup> Values such as maximum speed may vary depending on operating conditions.

<sup>\*</sup> Please refer to the "Specification" booklet for details.

<sup>\*1</sup>: On condition

<sup>\*2</sup>: Compatible with 220 / 380 / 400 / 420 / 480 V

<sup>\*3</sup>: Excluding signal tower

<sup>\*4</sup>: Only for main body

Model ID  
**AV131**  
Model No. NM-EJA3A, NM-EJA2A

### Higher insertion speed and operation efficiency improve productivity\*

- The insertion speed is increased to 0.12 s/component and transfer speed to 2.0 s/board. As a result, productivity is improved dramatically.
- Sequencer-less machine configuration allows re-insertion of components with one touch operation.
- For example, the AV131 has achieved increased productivity by lowered the insertion time by 4 and by raised the area productivity by 5.3, compared to our former model 15 years ago. (Compared to the AVB)

### Complete self-correction function ensures high reliability\*

- Complete self-offset function covering the entire surface of the PC board ensures accurate insertion.

### Vertical component feeder provides greater storage capacity\*

- Component feeder carriage can be installed and removed easily. Production change-over time is greatly reduced. (both 26 mm and 52 mm tapes)
- The two-separate component supply unit enable components to be exchanged and replenished during operation. (ex. exchange mode)

### Reduction of running cost

- The AV131 has spare parts commonality with the AVK3 such as service life expansion of the tape cutters and the lead cutters by reversibility.\*
- Titanium-coating is employed for the insertion guides; prolonging their service life as a result.\*
- The transfer system, the XY table, the controller and the driver can be used in any one of the Insertion machine series. The setup and maintenance operations are standardized.

### Operability enhancement

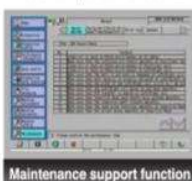
- Identical control panels are setup at the front side and the rear side of the AV131 so that operability can be significantly improved. (Standard specification)
- The liquid crystal touch panel is employed for the control panel and easy operation can be provided by the operation guidance indication.
- Japanese, English or Chinese can be selected by one touch operation as the language used for the screen displays.
- The new controller can store up to 200 types of programs. Data can be input to and output from high-capacity SD memory cards as well as floppy disks.
- NC data of our conventional equipment (the AV to the AVK3) can be used by the AV131.
- Setup support functions that display the component layout of the component supply unit on the screen are provided.
- Maintenance support functions that display information of regular maintenance time and operation content are provided.



Operation guidance indication



Setup support function



Maintenance support function

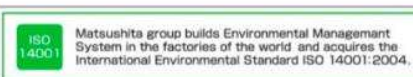


Rear side control panel

### Global transformer incorporated\*

- Global transformer compatible with 220, 380, 400, 420, and 480 Voltages. No external transformer necessary.

\*AVK3 commonality specification



<p><b>⚠ Safety Cautions</b></p>	<p>To ensure safety when using this equipment all work should be performed according to that as stated in the supplied Operating Instructions. Read your operating instructions manual thoroughly.</p>
---------------------------------	--

<p>Inquiries...</p>	<p><b>Panasonic Factory Solutions Co., Ltd.</b></p> <p>Marketing &amp; Solution Division</p> <p>441-13 Nagahasu, Tateishi-cho, Tosu-city, Saga 841-8585, Japan</p> <p>TEL +81-942-84-2644 to 2646 FAX +81-942-84-2636</p> <p><a href="http://panasonic.co.jp/pfsc/en/">http://panasonic.co.jp/pfsc/en/</a></p> <p>All data as of December 1, 2007.</p>
---------------------	--

\* Changes in specifications and appearance may be made without notice for product improvement.  
\* Recycled paper is used for this Catalog.